

# Specification Sheet: LED Eco Thin Panel

## Replace Your Fluorescent Lighting with Energy Efficient LED Thin Panels

Our LED Eco Thin Panel fixtures offer significant operational efficiencies over traditional fluorescent lighting. This energy-efficient LED luminaire maximizes the return on your lighting investment, delivering smooth light distribution through an edge-lit diffuser, combined with 0-10V dimming and battery backup option for your offices, schools, hospitals, retail and other highly frequented applications.

The efficiency of our ultra-thin LED luminaire is 50% greater than traditional lighting sources, and installs easily in T-bar drop ceilings or chain/cable hung to provide a 77,000-hour rated life and 10-year warranty to significantly reduce your long-term operational and maintenance costs.

### APPLICATIONS

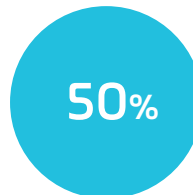
- Office
- Municipal
- Commercial
- Retail
- Showrooms
- Schools & Universities
- Hotels
- Hospitals & Clinics
- Assisted Living Facilities

### ILLUMINATION ANGLE



Revolution Lighting Light Distribution

### CAN DECREASE ENERGY USAGE BY



vs. Similar Fluorescent Fixtures

### WARRANTY



Our Industry-Leading 10-Year Limited Warranty Guarantees Unsurpassed Quality

## PRODUCT BENEFITS

### OPERATIONAL

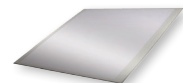
- 3X greater lamp life than fluorescent
- 77,000-hour lamp life reduces long-term maintenance costs
- Instant on, no warm-up time
- Installs in standard T-bar drop ceilings or hung with chain or cable
- 0-10V dimming
- Battery-backup option

### SAFETY

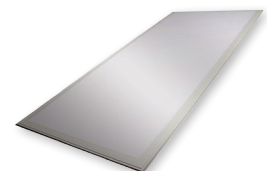
- No glass
- Negligible light depreciation over time
- Superior light output

### SUSTAINABILITY

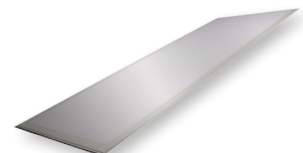
- Lack of UV or IR minimizes concerns with fading or discoloration
- Mercury-free, allowing for non-hazardous disposal
- 100% recyclable



2' x 2' Dimmable Eco Thin Panel



2' x 4' Dimmable Eco Thin Panel



1' x 4' Dimmable Eco Thin Panel



# Specification Sheet: LED Eco Thin Panel

## TECHNICAL DATA (Subject to change.)

| Catalog No.  | Product SKU No. | Rated Watts* | Lens    | Mounting    | Input Voltage (VAC) | Color Temp (K) | Rated Lumens | Rated Efficacy (lm/W)* | CRI | Illumination Angle | Rated Life (Hours) | Operating Temp. (°F) |
|--|-----------------|--------------|---------|-------------|---------------------|----------------|--------------|------------------------|-----|--------------------|--------------------|----------------------|
| <b>1' x 4' Dimmable Eco Thin Panel</b>                     |                 |              |         |             |                     |                |              |                        |     |                    |                    |                      |
| ETP-14-35-F-40-D   | 157043-103      | 36           | Frosted | T-Bar/Chain | 120-277             | 4000           | 3,759        | 104                    | 81  | 160                | 77,000             | -4 to 122            |
| <b>2' x 2' Dimmable Eco Thin Panel</b>                     |                 |              |         |             |                     |                |              |                        |     |                    |                    |                      |
| ETP-22-30-F-50-D   | 151042-105      | 30.5         | Frosted | T-Bar/Chain | 120-277             | 5000           | 3,279        | 107                    | 85  | 160                | 77,000             | -4 to 122            |
| <b>2' x 2' Dimmable Eco Thin Panel with Battery Backup</b> |                 |              |         |             |                     |                |              |                        |     |                    |                    |                      |
| ETP-22-20-F-35-D-BB  | 151041-102-BB   | 19.8         | Frosted | T-Bar/Chain | 120-277             | 3500           | 2,195        | 110                    | 82  | 160                | 77,000             | -4 to 122            |
| ETP-22-20-F-40-D-BB  | 151041-103-BB   | 19.8         | Frosted | T-Bar/Chain | 120-277             | 4000           | 2,195        | 110                    | 82  | 160                | 77,000             | -4 to 122            |
| ETP-22-30-F-35-D-BB  | 151042-102-BB   | 30.5         | Frosted | T-Bar/Chain | 120-277             | 3500           | 3,112        | 102                    | 84  | 160                | 77,000             | -4 to 122            |
| ETP-22-30-F-40-D-BB  | 151042-103-BB   | 30.5         | Frosted | T-Bar/Chain | 120-277             | 4000           | 3,112        | 102                    | 84  | 160                | 77,000             | -4 to 122            |
| ETP-22-30-F-50-D-BB  | 151042-105-BB   | 30.5         | Frosted | T-Bar/Chain | 120-277             | 5000           | 3,279        | 107                    | 85  | 160                | 77,000             | -4 to 122            |
| ETP-22-40-F-50-D-BB  | 151044-105-BB   | 40.3         | Frosted | T-Bar/Chain | 120-277             | 5000           | 4,790        | 118                    | 83  | 160                | 77,000             | -4 to 122            |
| <b>2' x 4' Dimmable Eco Thin Panel</b>                     |                 |              |         |             |                     |                |              |                        |     |                    |                    |                      |
| ETP-24-35-F-35-D   | 153043-102      | 34.8         | Frosted | T-Bar/Chain | 120-277             | 3500           | 3,529        | 101                    | 85  | 160                | 77,000             | -4 to 122            |
| ETP-24-35-F-40-D   | 153043-103      | 34.8         | Frosted | T-Bar/Chain | 120-277             | 4000           | 3,529        | 101                    | 85  | 160                | 77,000             | -4 to 122            |
| ETP-24-50-F-35-D   | 153045-102      | 49.9         | Frosted | T-Bar/Chain | 120-277             | 3500           | 5,283        | 105                    | 83  | 160                | 77,000             | -4 to 122            |
| ETP-24-75-F-50-D   | 153046-105      | 76.5         | Frosted | T-Bar/Chain | 120-277             | 5000           | 7,882        | 103                    | 83  | 160                | 77,000             | -4 to 122            |
| <b>2' x 4' Dimmable Eco Thin Panel with Battery Backup</b> |                 |              |         |             |                     |                |              |                        |     |                    |                    |                      |
| ETP-24-35-F-35-D-BB  | 153043-102-BB   | 34.8         | Frosted | T-Bar/Chain | 120-277             | 3500           | 3,529        | 101                    | 85  | 160                | 77,000             | -4 to 122            |
| ETP-24-35-F-40-D-BB  | 153043-103-BB   | 34.8         | Frosted | T-Bar/Chain | 120-277             | 4000           | 3,529        | 101                    | 85  | 160                | 77,000             | -4 to 122            |
| ETP-24-50-F-50-D-BB  | 153045-105-BB   | 50           | Frosted | T-Bar/Chain | 120-277             | 5000           | 5,407        | 108                    | 82  | 160                | 77,000             | -4 to 122            |

Product is DLC listed.

\* Note: Battery-backup option will increase system wattage by as much as 5W, which will also affect efficacy.

## PHYSICAL DATA

| Catalog No.  | Product SKU No. | Product Dimensions (in.) | Product Weight (lb) |
|--|-----------------|--------------------------|---------------------|
| <b>1' x 4' Dimmable Eco Thin Panel</b>                     |                 |                          |                     |
| ETP-14-35-F-40-D   | 157043-103      | 47.7L x 11.7W x 2.5H     | 10.6                |
| <b>2' x 2' Dimmable Eco Thin Panel</b>                     |                 |                          |                     |
| ETP-22-30-F-50-D   | 151042-105      | 23.7L x 23.7W x 2.5H     | 10.6                |
| <b>2' x 2' Dimmable Eco Thin Panel with Battery Backup</b> |                 |                          |                     |
| ETP-22-20-F-35-D-BB  | 151041-102-BB   | 23.7L x 23.7W x 2.8H     | 14.4                |
| ETP-22-20-F-40-D-BB  | 151041-103-BB   | 23.7L x 23.7W x 2.8H     | 14.4                |
| ETP-22-30-F-35-D-BB  | 151042-102-BB   | 23.7L x 23.7W x 2.8H     | 14.4                |
| ETP-22-30-F-40-D-BB  | 151042-103-BB   | 23.7L x 23.7W x 2.8H     | 14.4                |
| ETP-22-30-F-50-D-BB  | 151042-105-BB   | 23.7L x 23.7W x 2.8H     | 14.4                |
| ETP-22-40-F-50-D-BB  | 151044-105-BB   | 23.7L x 23.7W x 2.8H     | 14.4                |
| <b>2' x 4' Dimmable Eco Thin Panel</b>                     |                 |                          |                     |
| ETP-24-35-F-35-D   | 153043-102      | 47.7L x 23.7W x 2.38H    | 15.8                |
| ETP-24-35-F-40-D   | 153043-103      | 47.7L x 23.7W x 2.38H    | 15.8                |
| ETP-24-50-F-35-D   | 153045-102      | 47.7L x 23.7W x 2.38H    | 15.8                |
| ETP-24-75-F-50-D   | 153046-105      | 47.7L x 23.7W x 2.38H    | 15.8                |
| <b>2' x 4' Dimmable Eco Thin Panel with Battery Backup</b> |                 |                          |                     |
| ETP-24-35-F-35-D-BB  | 153043-102-BB   | 47.7L x 23.7W x 2.63H    | 19.6                |
| ETP-24-35-F-40-D-BB  | 153043-103-BB   | 47.7L x 23.7W x 2.63H    | 19.6                |
| ETP-24-50-F-50-D-BB  | 153045-105-BB   | 47.7L x 23.7W x 2.63H    | 19.6                |