

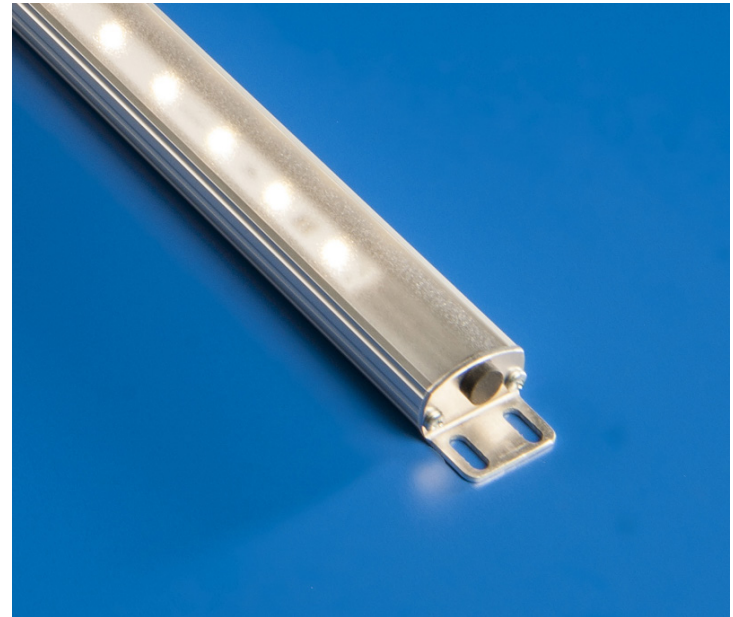
ILT ShelfLight

Open Case Under-Shelf LED Retrofit System



ShelfLight™ Features Include:

- ◆ Wide Beam Angle – Flood Shelf from Front to Back
- ◆ Low Power Consumption – 2W per Foot
- ◆ Low Profile – More Room on Shelf for Product
- ◆ Fast ROI - Even Faster with Rebates
- ◆ Multiple Color Temps Available – Match to Specific Food Group (ex. 3000K for Red Meat)
- ◆ Long Life / Low Maintenance - 5 Year Warranty on ShelfLight Modules & Power Supplies
- ◆ DLC Listed for Horizontal Refrigerated Case Lighting - Eligible for ALL Utility Rebates
- ◆ Eliminates Hazardous Waste Concerns - No Mercury
- ◆ ShelfLight Modules Manufactured in the USA



Following on the success of ILT's Vertical & Horizontal CaseLight modules for refrigerated/freezer display cases, ILT's new Horizontal ShelfLight module is designed to replace existing fluorescent light fixtures in horizontal food display cases (reach-in/multi-deck dairy, produce & prepared foods) easily and cost-effectively.

LED-based Horizontal ShelfLight modules provide all of the advantages of LED-based lighting including much longer life (greater than 50,000 hours), much lower energy consumption and much better lighting characteristics – brighter light focused on the merchandise. Plus all of ILT's ShelfLight modules are DLC listed qualifying for maximum utility rebates.

**45-Plus Years of ILT Lighting Experience
Goes Into Every CaseLight!**



ILT INNOVATIONS

Part Number	Description	Color Temp. (K)	Lumens	Energy (Watts)	CRI	Recommended Applications
ILT36-SF-W30	Horizontal ShelfLight, 36", 24 VDC Input	3000	450	5.5	90	Fresh Meats
ILT36-SF-W35	Horizontal ShelfLight, 36", 24 VDC Input	3500	450	5.5	90	Fresh Meats
ILT36-SF-W40	Horizontal ShelfLight, 36", 24 VDC Input	4000	475	5.5	90	Produce, Dairy
ILT36-SF-W50	Horizontal ShelfLight, 36", 24 VDC Input	5000	475	5.5	87	Frozen Food
ILT48-SF-W30	Horizontal ShelfLight, 48", 24 VDC Input	3000	675	8.3	90	Fresh Meats
ILT48-SF-W35	Horizontal ShelfLight, 48", 24 VDC Input	3500	675	8.3	90	Fresh Meats
ILT48-SF-W40	Horizontal ShelfLight, 48", 24 VDC Input	4000	712	8.3	90	Produce, Dairy
ILT48-SF-W50	Horizontal ShelfLight, 48", 24 VDC Input	5000	712	8.3	87	Frozen Food
ILT70-SF-W30	Horizontal ShelfLight, 70", 24 VDC Input	3000	1125	13.8	90	Fresh Meats
ILT70-SF-W35	Horizontal ShelfLight, 70", 24 VDC Input	3500	1125	13.8	90	Fresh Meats
ILT70-SF-W40	Horizontal ShelfLight, 70", 24 VDC Input	4000	1190	13.8	90	Produce, Dairy
ILT70-SF-W50	Horizontal ShelfLight, 70", 24 VDC Input	5000	1190	13.8	87	Frozen Food
ILT-CEN-60-24	60 Watt, UL Class 2 Power Supply 100-277 VAC, 24VDC output					Powers up to 7 48" units
ILT-LPF-40-24	40 Watt, UL Class 2 Power Supply 100-277 VAC, 24VDC output					Powers up to 8 36" units or 5 48" units
ILT-D24V100UNVA	100 Watt, UL Class 2 Power Supply 120-277 VAC, 24VDC output					Powers up to 7 70" units or 11 48" units

SHELFLIGHT SPECIFICATIONS

- High Efficiency: 48" unit, 600 lumens @ 7.5W of power
- Color Temperatures Available: 3000K, 3500K, 4000K and 5000K
- Lengths: Available in 48" and 70" (other lengths special order)
- Configuration: Low profile aluminum extrusion with protective lens (0.69" high); 4.5 foot long input power cable; Wide beam angle of near 150 degrees
- CRI: 85 or greater; R9 of ~40
- Maximum Measured Source Temperature (Tc): 36C (LED Rating – 138C) Result is very long life for LEDs
- Power Supply: 40W, 24VDC, >88% efficiency, Power Factor >0.90
- Power up to 5 – 48" ShelfLights on 1 – 40W Power Supply
- Certifications: UL (pending), DLC, NSF (pending)
- Right-Angle Mounting Brackets for easy installation
- Size: 0.69" thick X 1.12" wide
- Finish: Brite clear anodize (polished aluminum)
- Warranty: 5 year



InternationalLight
TECHNOLOGIES

ISO 9001 / ISO/IEC 17025

10 Technology Drive, Peabody, MA 01960

978-818-6180 978-818-6181 fax

www.intl-lighttech.com

International Light Technologies